

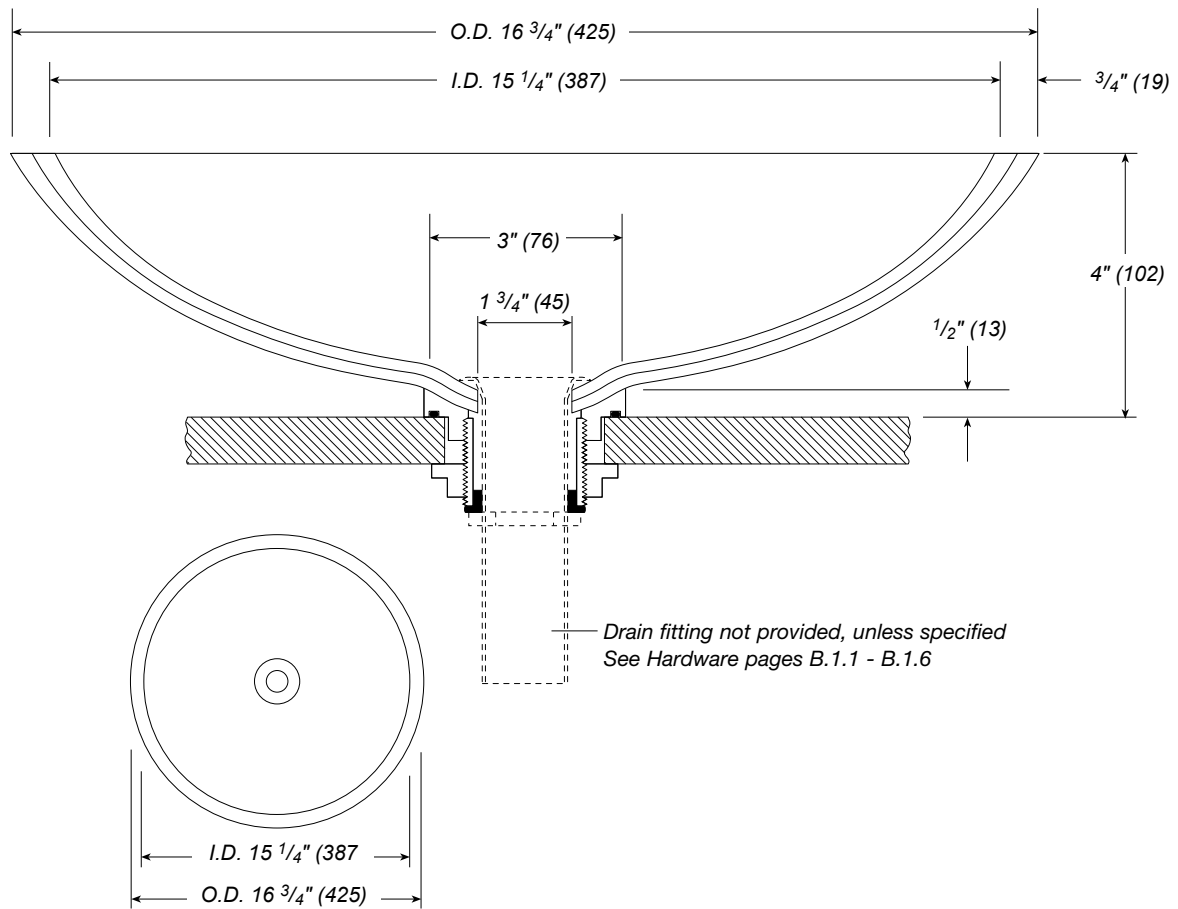
 **Large Round ADA Freestanding Basin** Item No. 214

See page 3.1.c for general ADA guidelines. Contact factory for installation of this product to meet ADA guidelines in coordination with your faucet specification.

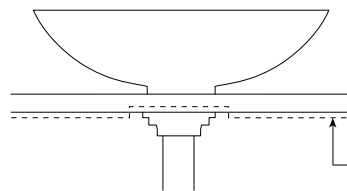
Overflow not available for Freestanding Basin.

Requires 2 1/2" (64) dia. hole in counter for installation.

Specify counter thickness if greater than 1 1/4" (32).



Drain fitting not provided, unless specified  
See Hardware pages B.1.1 - B.1.6



Acceptable counter thickness without modifications is 1" (25).  
Drain Mount Nut may be inverted to accommodate up to 1 1/4" (32) material.  
For countertops over 1 1/4" (32) thick, create 5" (127) diameter relief hole under counter to accommodate drain mount nut as shown.  
Where modification is not possible, contact factory for assistance.