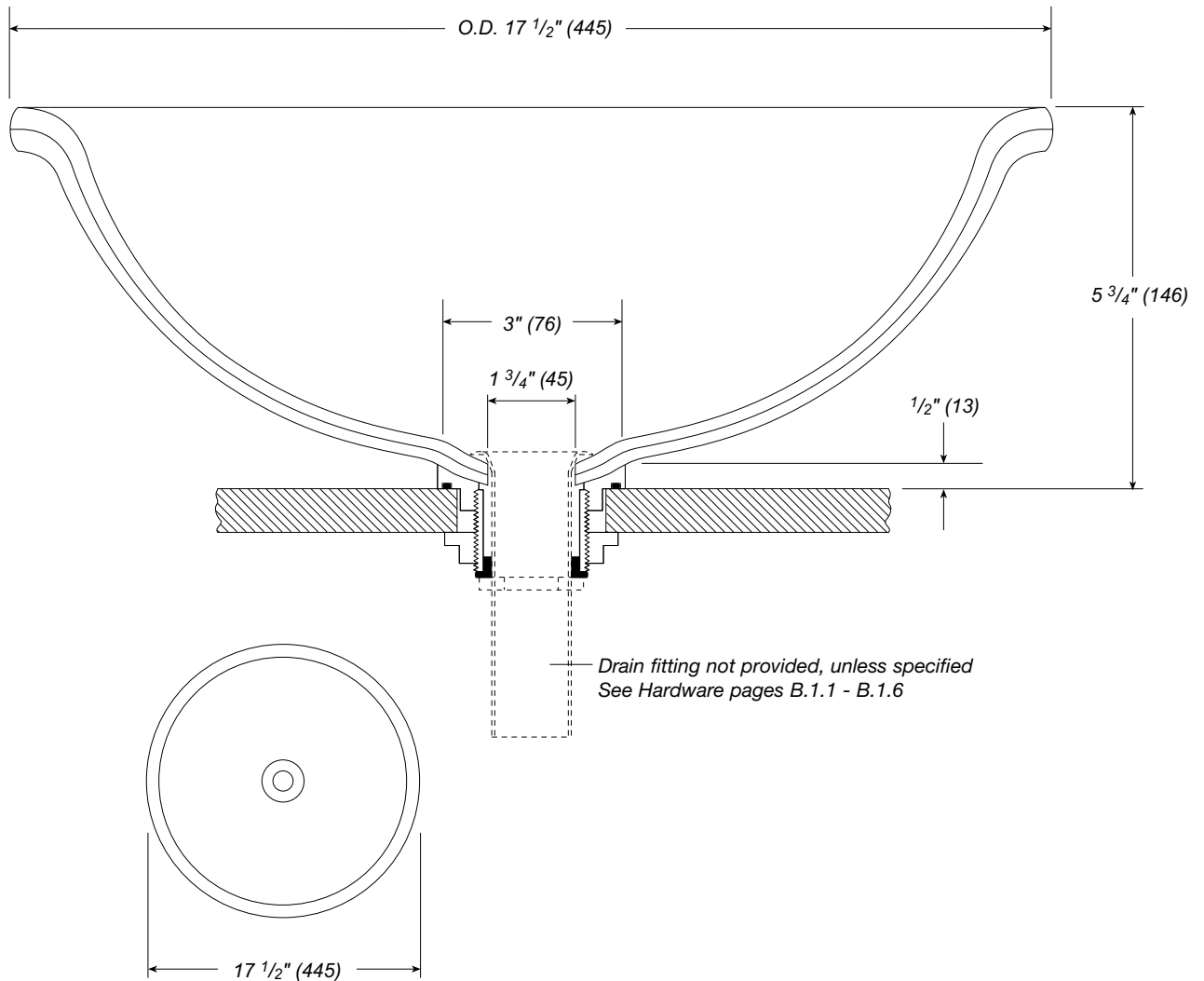


Large Round Freestanding Basin with Pencil Edge Item No. 230

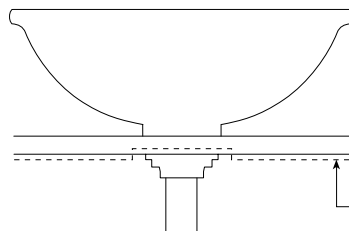
Overflow not available for Freestanding Basin.

Requires 2 1/2" (64) dia. hole in counter for installation.

Specify counter thickness if greater than 1 1/4" (32).



Drain fitting not provided, unless specified
See Hardware pages B.1.1 - B.1.6



Acceptable counter thickness without modifications is 1" (25).
Drain Mount Nut may be inverted to accommodate up to 1 1/4" (32) material.
For countertops over 1 1/4" (32) thick, create 5" (127) diameter relief hole
under counter to accommodate drain mount nut as shown.
Where modification is not possible, contact factory for assistance.