


Rectangular Countersink with Overflow

Rectangular Front Countersink Item No. 370
 Radius Front Countersink Item No. 470

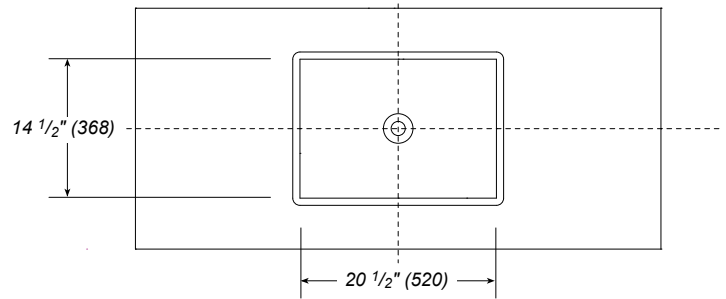
Available in standard widths from 30" (762) to 84" (2132), with one or two bowls. Custom sizes and shapes by request.

See Hardware Specification pgs B.2.2-12 for Vitraform Countersink mounting systems.

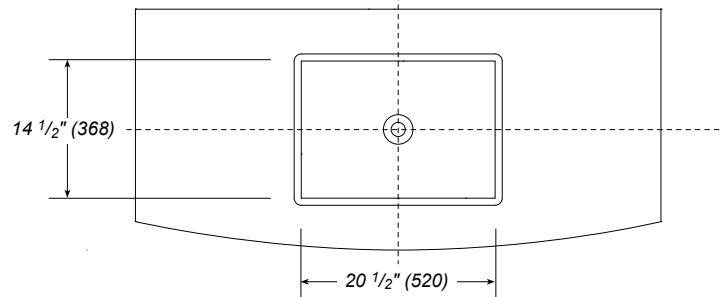
Available with or without overflow. See hardware pg B.1.8 to order Rectangular Overflow, Item number 918.xx as a separate item with choice of finish.

 See page 4.1.f for general ADA guidelines. Contact factory for installation of this product to meet ADA guidelines in coordination with your faucet specification.

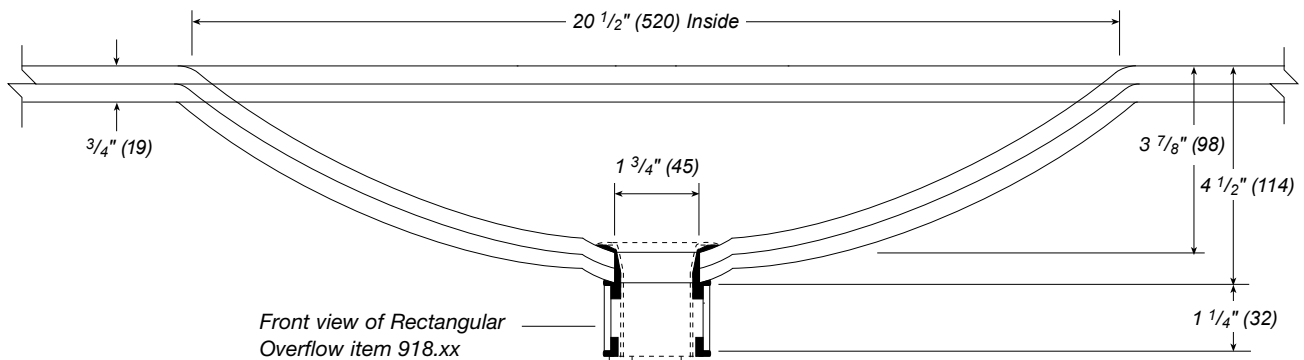
Rectangular Countersink Item No. 370



Rectangular Countersink Item No. 470

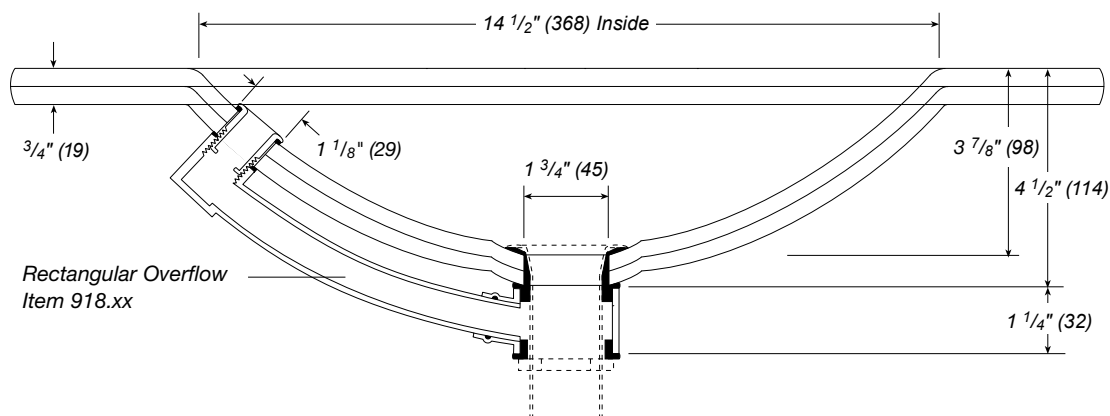


Long Section (A)



Drain fitting not provided, unless specified.
 See Hardware pg B.1.1 - B.1.6

Short Section (B)



FAUCET SELECTION FOR RECTANGULAR COUNTERSINKS 370 AND 470

Vitraform Rectangular Basins are shallow and may require consideration for use with a tall spout. Instead of positioning their hands in the bowl, the user may raise their hands high above the basin to receive the water, which causes splashing.